

# Britney Spears - Gimme More

Arr. by Tony Dao (thepianocian)  
<http://www.thepianocian.com>

Lively

Piano

*mf*

5

8

9

8

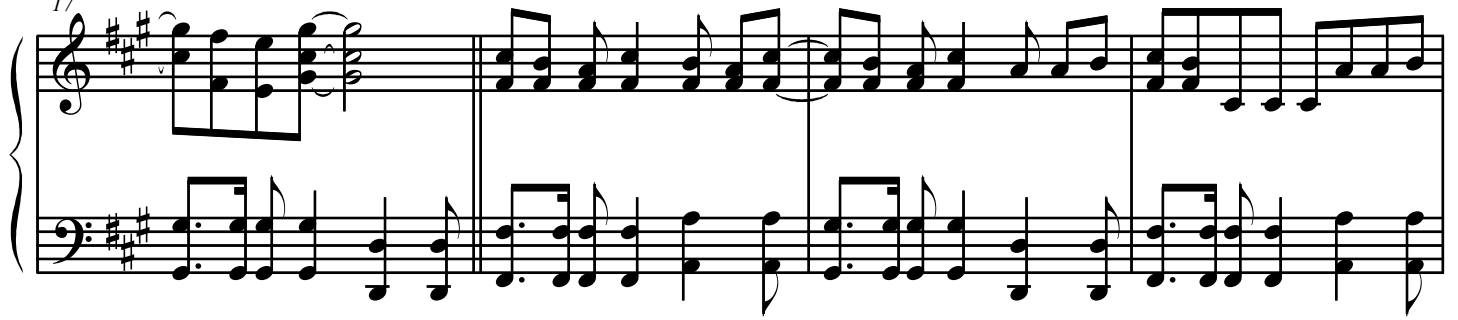
13

8

2

## Britney Spears - Gimme More

17



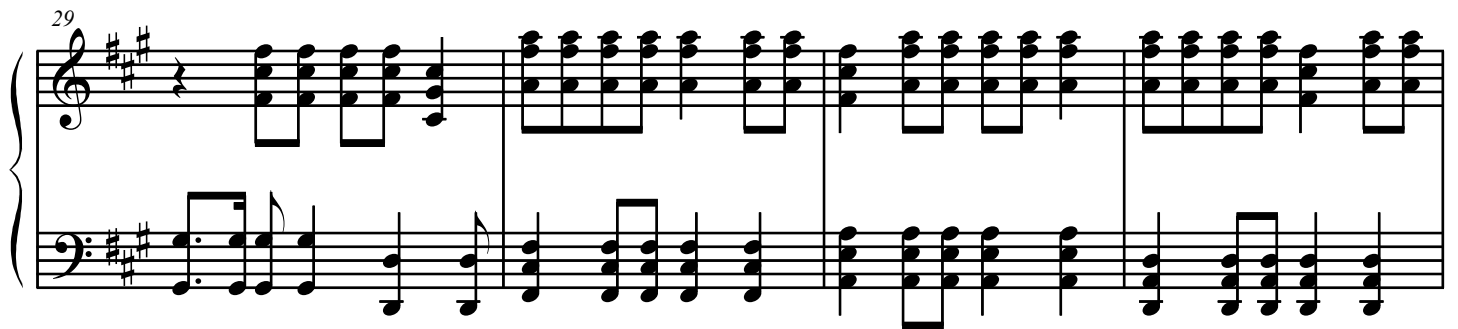
21



25



29



33

*mf*

37

41

45

49

Measures 49-52 of the piano accompaniment for "Gimme More" by Britney Spears. The key signature is D major (two sharps). Measure 49 features a treble clef with a half note G4, a quarter note A4, and a half note B4, followed by a repeat sign. The bass clef has a half note D3, a quarter note E3, and a half note F3. Measures 50-52 are marked with a forte (*f*) dynamic and feature a dense texture of chords and moving lines in both staves.

53

Measures 53-56 of the piano accompaniment. Measures 53-54 have a treble clef with a half note G4, a quarter note A4, and a half note B4, followed by a repeat sign. The bass clef has a half note D3, a quarter note E3, and a half note F3. Measures 55-56 continue the chordal texture with some movement in the bass line.

57

Measures 57-60 of the piano accompaniment. Measures 57-58 have a treble clef with a half note G4, a quarter note A4, and a half note B4, followed by a repeat sign. The bass clef has a half note D3, a quarter note E3, and a half note F3. Measures 59-60 are marked with a mezzo-piano (*mp*) dynamic and feature a gradual crescendo, indicated by a hairpin symbol.

60

Measures 60-63 of the piano accompaniment. Measures 60-61 are marked with a mezzo-forte (*mf*) dynamic. Measures 62-63 are marked with a forte (*f*) dynamic and feature a gradual crescendo, indicated by a hairpin symbol.

63

67

71

*mf*

75

79

mp

This system contains measures 79 through 82. The key signature is D major (two sharps). Measure 79 features a melodic line in the treble clef starting on G4, with a quarter rest in the bass. Measures 80 and 81 continue the melody with eighth and quarter notes. Measure 82 begins with a piano introduction marked *mp* (mezzo-piano), showing a dense texture of chords in both staves.

83

mf

This system contains measures 83 through 86. Measures 83 and 84 feature a rapid eighth-note melody in the treble clef. Measures 85 and 86 continue this pattern. The bass clef provides a steady accompaniment of chords. A piano introduction marked *mf* (mezzo-forte) is indicated in measure 85.

87

f

This system contains measures 87 through 90. Measures 87 and 88 continue the eighth-note melody in the treble. Measures 89 and 90 show a more complex texture with chords in the treble and a moving bass line. A piano introduction marked *f* (forte) is indicated in measure 89.

91

This system contains measures 91 through 94. Measures 91 and 92 feature a melody in the treble clef with some rests. Measures 93 and 94 continue the melody. The bass clef provides a consistent accompaniment of chords and moving lines.

95

*mf*

99

103